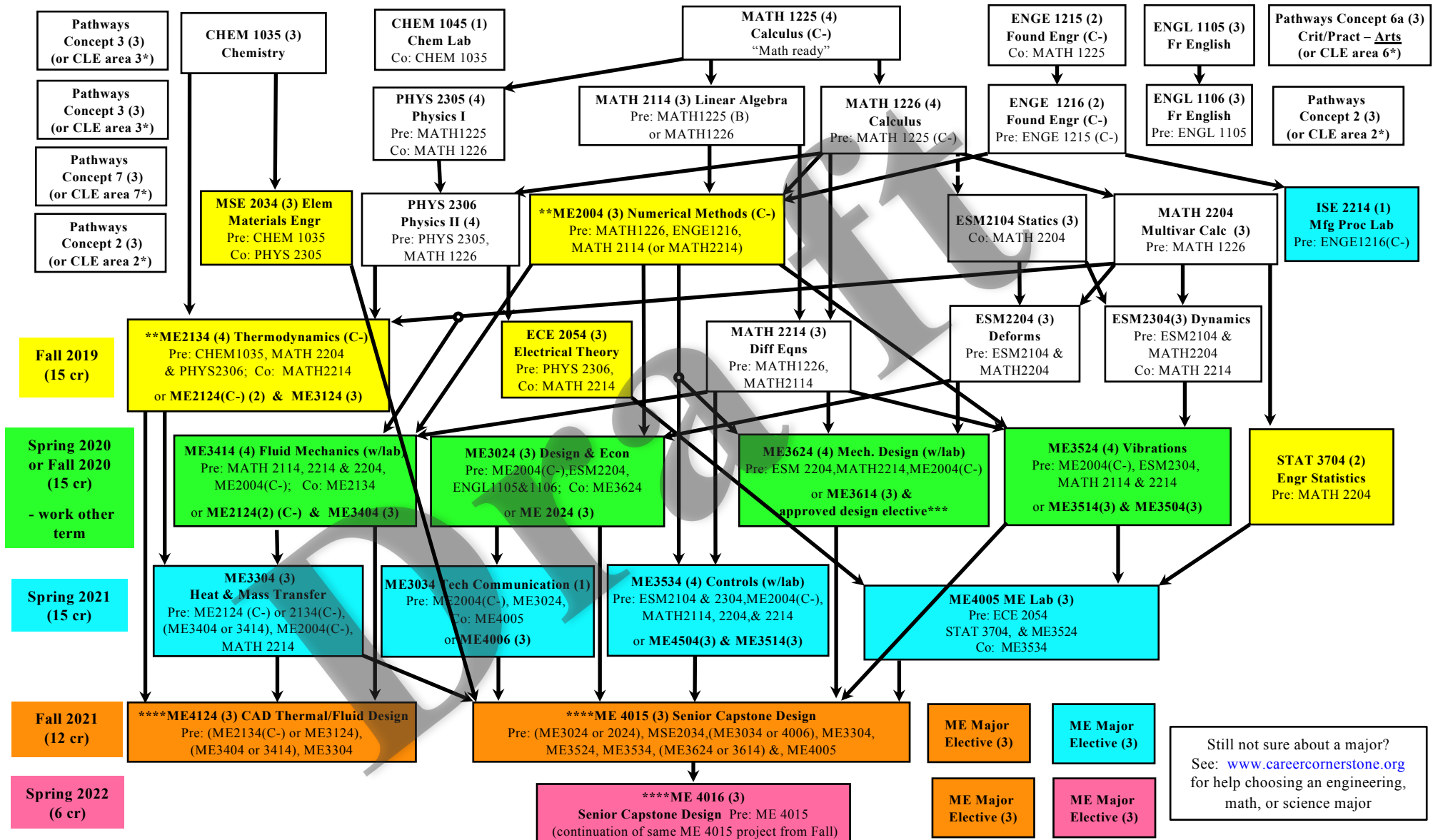


Mechanical Engineering – Suggested Co-op Plan for Transfer Students with VCCS AS Degree Starting Fall 2019

Student gets paid work experience for 1-2 summers plus either Fall or Spring 2020 in an engineering-related job.



Notes: Courses in white boxes assumed to be completed prior to Fall 2019.

-Arrows denote prerequisites. Please check for updates in the undergraduate catalog. You are welcome to meet with an ME advisor to discuss your course plans.

*Pathways vs. CLE electives based on date of entrance, not graduation. AS degree satisfies these elective requirements.

**Must earn C- or higher in ME2004 & ME2134 to meet prerequisite & graduation requirements.

***Approved design elective may count towards ME major elective credits.

****Required senior courses are offered only once per year; ME4015 & ME4016 must be taken in order during the same academic year, beginning in Fall.

Continued enrollment requirements: see ME website for more information, www.me.vt.edu.

-2.000 minimum in-major GPA (all “ME” & “NSEG” courses)

-2.000 minimum extended in-major GPA (“ME”, “NSEG” courses & ESM2104, 2204, & 2304)

-2.000 minimum overall GPA (all courses)

-By 45 attempted required hours completion of: ESM2104, MATH2204 & MATH2114

-By 60 attempted required hours completion of: MATH2214, ESM2304, & ME2004 (C-)

-By 72 attempted required hours completion of: ME2134 (C-), ME3624, and ME3524

- By 90 attempted required credits completion ME4015 and ME4124

Revised March 20, 2019